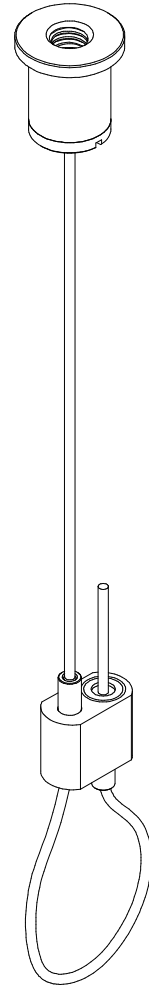
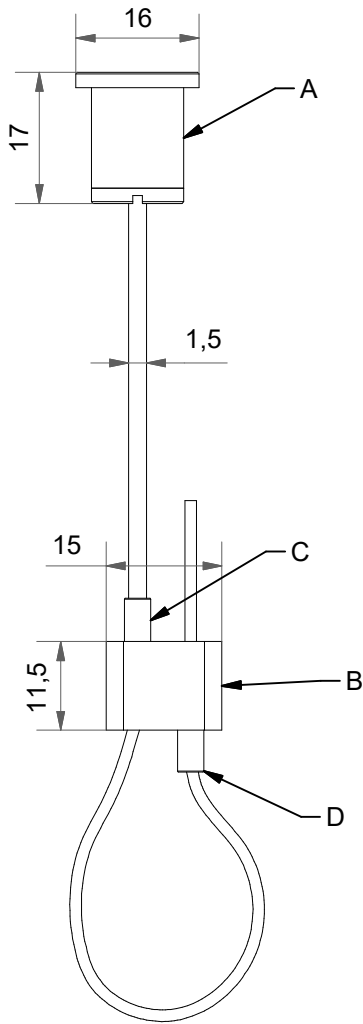


PROPERTIES

- Safe – the system must only be used with the $\varnothing 1.5$ mm steel cable included in the kit, ensuring the appropriate strength.
- Reliable – it is recommended to use a minimum of two suspensions per object to guarantee installation stability.
- Practical – height adjustment is simple: press the button and move the cable gripper up or down.
- Flexible – allows height adjustment of the system at any time, provided the load is previously removed or supported.
- Durable – made of nickel-plated brass and 304 stainless steel, with high wear resistance.
- Protected – the cable must be free of oil, paint, rust, or other defects to guarantee safe operation.
- Specific use – suitable only for static loads indoors and in dry environments at room temperature.



INSTALLATION

- Fix the ceiling accessory (A) to the ceiling with an M6 screw with a head smaller than $\varnothing 10$ mm.
- Pass the cable (L) through the lower part of A.
- Insert the cable (L) into the plunger (C) and pull it out through the plunger (D) of the cable gripper (B), after having passed it through the hole.

MATERIALS

A: Material: Nickel-plated brass
Size: $\varnothing 16 \times 17$ mm

B: Cable gripper "Loop"
Material: Nickel-plated brass
Size: $\varnothing 9 \times 26$ mm

L: Stainless steel cable 304
Size: $\varnothing 1.5 \times 2000$ mm

IDEATEC
advanced acoustic solutions

Technical Data Sheet

Review: 1

Page: 1

Sheet N° 1

Product: IDEAFLOW

Ref: LOOP GRIPPER

Notes: MEASUREMENTS IN MM

Done: Technical Department

Date: 24/09/2025

Approved:

Date: 24/09/2025

Cancelled:

Date: