

## Technical data sheet

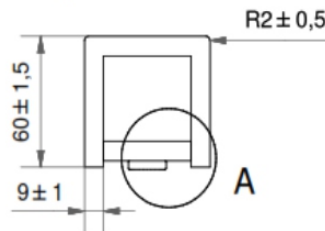
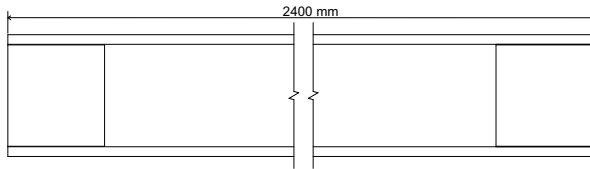
### VIGA Ideaflow

# IDEATEC

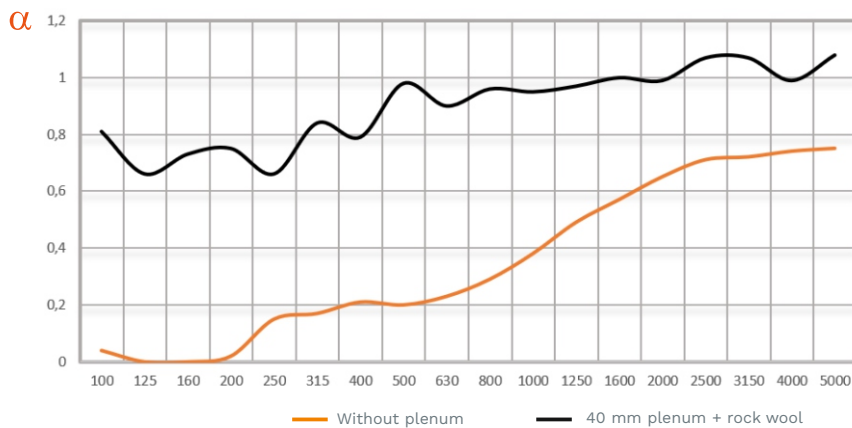
advanced acoustic solutions

## DESCRIPTION

2400x60x60 mm modules with 9 mm thickness and 50x52.4 mm square crossbars with 9 mm thickness. Product without squaring. Recycled polyester fiber core.



## ACOUSTIC TEST



## STUDIED DATA

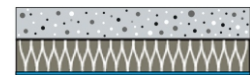
Sizes: 2440x1220 mm

Thickness: 9 mm

Weight: 2 kg/m<sup>2</sup>

Density:

**PET Fiber:** 220 kg/m<sup>3</sup> (+/- 6%)



Test sample with Plenum.



Test sample without Plenum.

\*Material with high absorptive coefficients to high (H) frequencies.

Medium absorptive coefficient  $\alpha_m = 0.41$   $\alpha_m = 0.97$

Average absorptive coefficient  $\alpha_w = 0.30^*$   $\alpha_w = 0.95$

Noise reduction coefficient  $NRC = 0.35$   $NRC = 0.90$

## TECHNICAL FEATURES

<b>Sizes</b>	2400x60x60 mm. 9 mm thickness.
<b>Tolerances</b>	Width: $\pm 3$ mm ; Length: $\pm 3$ mm.
<b>Water-resistant</b>	Ask for properties.
<b>Absorptive Core</b>	Recycled polyester fiber core.
<b>Fire-rated</b>	UNE 13501 Polyester fiber: B-s1,d0

\*Ask for other finishes or sizes.

## PRODUCT REMARKS

The goods should be stored in the jobsite at least 24h prior to the installation. The temperature must be between 18° and 25° and the relative humidity between 40% and 60%. The core panel is a fiber material, the light's incident may generate shadows, wavy relief and similar effects. We recommend to leave a 5mm joint between panels.

## ADDITIONAL FEATURES

<b>Washable Product</b>	Clean with a damp cloth. Do not use chemical agents.
<b>Impact Resistance</b>	Depends on the support material.
<b>Scratching Resistance</b>	Depends on the finishing material.
<b>Dirt Proof</b>	Moderate resistance to dirt.
<b>Recyclable</b>	100% recyclable.
<b>Earthquake-resistant</b>	Possible to install an anti-seismic system.

## INSTALLATION STANDARD SYSTEM

### Walls & suspended ceilings

Fastening by magnets or mounting adhesive.

